

Where everyone gets to be in the limelight!

SEASON 19



The

ADVENTURE

begins

THE 2025-2026 CLASS COLLECTION

Register!



The Performing
Arts Connection



The Performing Arts Connection

DEAR FAMILIES,

Welcome to The Performing Arts Connection!

As we embark on our 19th season, we invite you to embrace the spirit of **adventure!** Every class, rehearsal, and performance is a journey—one that encourages creativity and a sense of wonder, builds confidence, and fosters a sense of belonging. Whether you are exploring the stage for the first time or continuing to blaze your artistic trail, this season is all about inspiring adventure! Together, we'll explore new possibilities and discover the world through storytelling and the performing arts.

At TPAC, we are more than a studio; we are a community. Our woman-owned, women-led small business thrives and makes a lasting impact because of the incredible families we serve. Thank you for trusting us for nearly two decades to help shape the artists, dreamers, and leaders of tomorrow. I'm thrilled to have you as part of our TPAC family, and I can't wait to live the adventure this season!

Samantha Bower

Owner/Artistic Director



2025 REGISTRATION DATES

Sun, April 27 @ 7pm

Current Conservatory students may register for the upcoming Conservatory season.

Sun, May 4 @ 7pm

The Conservatory Program and Fall Terms of Little Limelight and Fun Days open to all!

Sun, June 8 @ 7pm

Fall Youth Musical registration opens!

Sun, October 19 @ 7pm

Winter/Spring Youth Musical, Little Limelight, Fun Days, and more!

Register
Online!



REGISTRATION 411

- 1 Double-check all important dates, especially mandatory dates such as dress rehearsals and performance date(s)!
- 2 Check out the Studio Calendar and take note of studio closed dates.
- 3 Take note of any prerequisites, such as age, grades, or classes requiring faculty recommendation.
- 4 Review TPAC policies (refunds, attendance, etc.) at least once annually.
- 5 Create or update your Family Account/Student Profile in the Parent Portal, agree to policies (annually), and sign up online!

TPAC Policies
(Refunds, Attendance, etc.)



Studio Calendar
(Closed Dates, etc.)



Financial Aid
Application



STUDIO CLOSED DATES

Tues, September 23 – STUDIO CLOSED. ROSH HASHANAH.
Wed, October 1 – STUDIO CLOSED AT 3PM. EREV YOM KIPPUR.
Thurs, October 2 – STUDIO CLOSED. YOM KIPPUR.
Fri–Mon, October 10–13 – STUDIO CLOSED. AUTUMN BREAK/INDIGENOUS PEOPLES' DAY.
Fri, October 31 – STUDIO CLOSED. HALLOWEEN.
Tues, November 11 – STUDIO CLOSED. VETERAN'S DAY.
Mon–Sun, November 24–30 – STUDIO CLOSED. THANKSGIVING BREAK.
Sun–Sun, December 14–January 4 – STUDIO CLOSED. WINTER BREAK 1.
Mon, January 19 – STUDIO CLOSED. MARTIN LUTHER KING DAY.
Sun–Sun, February 15–22 – STUDIO CLOSED. WINTER BREAK 2.
Mon–Thurs, March 9–12 – STUDIO CLOSED. INTERSESSIONAL BREAK.
Fri–Sun, April 3–5 – STUDIO CLOSED. GOOD FRIDAY/EASTER.
Sun–Sun, April 19–26 – STUDIO CLOSED. SPRING BREAK.

Studio Calendar
(Closed Dates, etc.)



As of 8/25/25

Little Limelight™

Discovering Dance & Drama for Ages 0-7

Register:
Sun, May 4
@ 7pm

Caregiver Participation/Non-Recital Classes

1-YEAR-OLDS

Ages 11-23 months at 1st class



Mondays 9:30-10:00am

2-YEAR-OLDS

Ages 23-36 months at 1st class



Saturdays 8:30-9:00am

2.5-3.5-YEAR-OLDS

Ages 2.5-3.5 years at 1st class



Saturdays 8:30-9:00am

On-My-Own Recital Classes

3-YEAR-OLDS

Age 3 by Sept. 1

Twirl, Leap and Tumble

Thursdays 3:15-4:00pm **NEW!**

Saturdays 9:15-10:00am **1 spot left!**

Musical Theater

Thursdays 5:00-5:45pm **Full!**

4- + 5-YEAR-OLDS

Age 4 by Sept. 1

Twirl, Leap and Tumble

Thursdays 3:15-4:00pm

Saturdays 10:15-11:00am **Full!**

Musical Theater

Mondays 4:15-5:00pm **Full!**

Mondays 5:00-5:45pm **Full!**

Saturdays 9:15-10:00am **2 spots left!**



Class Descriptions



GRADES K-1

Gr. K or 1 in 2025-2026 school year

Ballet/Hip-Hop

Fridays 3:30-4:15pm **3 spots left!**

Saturdays 9:15-10:00am

Accelerated Ballet/Hip-Hop gr. 1

(1 year Ballet required)

Fridays 4:30-5:30pm

Musical Theater

Mondays 4:15-5:00pm **1 spot left!**

Mondays 6:00-6:45pm

Thursdays 6:00-6:45pm

Saturdays 10:15-11:00am **Full!**

DATES AND DETAILS

Fall Term: Monday, September 8-Thursday, December 11 with December Recital on Saturday, December 13.

Winter/Spring Term: Monday, January 12-Thursday, May 14 with Spring Recital on Saturday, May 16.

Please see Page 3 for studio closed dates.

- After tuition, fees include Recital tickets and classroom attire.
- Registration deadlines: Sept. 30 (Fall) and Feb. 9 (Winter/Spring).
- Recital times and specific show assignments are emailed approximately one month after classes begin. Recital participation is optional.



THE CONSERVATORY PROGRAM



From your child's first class to their graduation performance, The Conservatory Program has a class for everyone! TPAC is proud to be a second home for kids during their developmental years. If you're looking for a deep dive into your theater and dance training, this is the program for you!



September–May for students in grades 2–12

Term 1: September 8–January 15 | **Term 2:** January 20–May 14

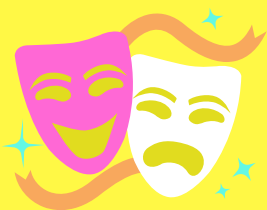
THEATER



"You are perfectly cast in your life. I can't imagine anyone but you in the role. Go play."

–Lin-Manuel Miranda

Through our dynamic and fun programming, along with our years of expertise in theater education, students find their role on stage and in life at TPAC!



THEATER

Family Observation Week:

Mon–Thurs, November 3–6 at TPAC.

Spring Theater Showcase Week:

Monday–Thursday May 11–14 at TPAC for Musical Theater and Acting classes. Friends and family are welcome to attend!

DANCE



"Be strong, be fearless, be beautiful. And believe that anything is possible when you have the right people there to support you."

–Misty Copeland

Dance boosts confidence, coordination, and compassion for others. Dancers learn life skills like perseverance and teamwork. Or as we like to say around here...Dance makes great kids!

SHOWTIME

DANCE

Family Observation Week:

Mon–Thurs, November 3–6 at TPAC.

Spring Dance Recital:

Friday–Sunday, May 15–17 at a local theater. Costume fees and tickets are additional.

CONSERVATORY PROGRAM SCHEDULE

GRADES 2-3

Monday - 4:00-5:00 - Musical Theater
 Monday - 4:00-5:00 - Acro
 Monday - 5:00-6:00 - Jazz/Hip-Hop
 Tuesday - 3:15-4:00 - Tap gr. 2-4
 Tuesday - 4:00-5:00 - Musical Theater
 Tuesday - 4:00-5:00 - Jazz/Hip-Hop
 Wednesday - 3:15-4:00 - Acting
 Wednesday - 6:30-7:30 - Musical Theater
 Thursday - 4:00-5:00 - Ballet/Jazz/Hip-Hop 🦌

GRADES 4-5

Monday - 5:00-6:00 - Musical Theater II* 🦌
 Monday - 5:00-6:00 - Acro I-II gr. 4-6
 Monday - 6:15-7:15 - Jazz/Hip-Hop 🦌
 Monday - 7:15-8:15 - Ballet/Lyrical gr. 5-9
 Monday - 8:15-9:00 - Hip-Hop gr. 5-8
 Tuesday - 3:15-4:00 - Tap gr. 2-4
 Tuesday - 4:00-5:00 - Jazz/Hip-Hop
 Tuesday - 4:00-5:00 - Tap gr. 5-8 🦌
 Tuesday - 5:00-6:00 - Musical Theater I-II
 Tuesday - 6:15-7:15 - Acting II-III* gr. 5-8
 Tuesday - 7:15-8:15 - Musical Theater III* grades 5-8
 Wednesday - 4:00-5:00 - Acting II

GRADES 6-8

Monday - 5:00-6:00 - Acro I-II gr. 4-6
 Monday - 7:15-8:15 - Ballet/Lyrical gr. 5-9
 Monday - 8:15-9:00 - Hip-Hop gr. 5-8
 Tuesday - 4:00-5:00 - Tap gr. 5-8 🦌
 Tuesday - 5:00-6:00 - Dancers Conditioning gr. 7-12
 Tuesday - 6:15-7:15 - Acting II-III* gr. 5-8
 Tuesday - 6:15-7:15 - Musical Theater I-II
 Tuesday - 7:15-8:15 - Musical Theater II* gr. 6-9
 Tuesday - 7:15-8:15 - Musical Theater III* grades 5-8
 Tuesday - 8:15-9:15 - Acting IV* gr. 8-12
 Wednesday - 5:00-6:15 - Musical Theater V*^ gr. 7-12
 Thursday - 5:00-6:00 - Jazz/Hip-Hop
 Thursday - 6:15-7:15 - Intermediate Jazz/Hip-Hop grades 6-9 🦌

GRADES 9-12

Monday - 7:15-8:15 - Ballet/Lyrical gr. 5-9
 Monday - 8:15-9:15 - Advanced Hip-Hop
 Tuesday - 5:00-6:00 - Dancers Conditioning gr. 7-12
 Tuesday - 7:15-8:15 - Musical Theater II* gr. 6-9
 Tuesday - 8:15-9:15 - Acting IV* gr. 8-12
 Wednesday - 5:00-6:15 - Musical Theater V*^ gr. 7-12
 Wednesday - 7:30-8:30 - Broadway Dance Rep
 Thursday - 6:15-7:15 - Intermediate Jazz/Hip-Hop grades 6-9 🦌

LEVELED DANCE

Monday - 5:00-6:00 - Acro II*
 Monday - 6:15-7:15 - Acro II-III*
 Monday - 6:15-7:15 - Ballet I-II*
 Monday - 7:15-8:15 - Lyrical/Contemporary I-II*~
 Monday - 7:15-8:15 - Acro IV*
 Tuesday - 5:00-6:00 - Jazz II-III*~
 Tuesday - 7:15-8:15 - Lyrical/Contemporary IV*~
 Tuesday - 7:15-8:15 - Lyrical/Contemporary V*~
 Tuesday - 8:15-8:45 - Pointe*# 🦌
 Tuesday - 8:50-9:20 - Pre-Pointe*# (non-Recital class)
 Wednesday - 6:15-7:30 - Ballet II-III*
 Wednesday - 6:15-7:30 - Ballet IV*
 Wednesday - 6:15-7:30 - Ballet V*~
 Thursday - 4:00-5:00 - Jazz I-II*
 Thursday - 6:15-7:15 - Tap V*~
 Thursday - 7:15-8:15 - Ballet Technique IV/V*~ (non-Recital class)
 Thursday - 7:15-8:15 - Lyrical/Contemporary II*~
 Thursday - 8:15-9:15 - Jazz IV*~
 Thursday - 8:15-9:15 - Jazz V*~

DANCE TEAM

Altitude*

Thursday - 5:00-6:00 - Team Class

Calypso*

Wednesday - 4:15-5:00 - Team Ballet

Wednesday - 5:00-6:00 - Team Class

Stars*

Wednesday - 4:15-5:00 - Team Class

Wednesday - 5:00-5:30 - Team Ballet

Comets*

Tuesday - 5:00-6:30 - Team + Technique Class

Company*

Wednesday - 7:30-8:30 - Production

Audition and additional commitment required. See EDT.

Sunday
April 27
7:00pm

Register: Returning
Conservatory Students

Register: NEW
Conservatory Students

Sunday
May 4
7:00pm



Scan to view
class descriptions

REQUIREMENT KEY

*Faculty Rec or Audition Required

~TPAC Ballet Class Req'd

^TPAC Dance Class Req'd

#Two TPAC Ballet Classes

+1 year Ballet prerequisite

Holiday Extravaganza Class

Conservatory Classes marked with a reindeer participate in our Holiday Extravaganza! Each included class will learn one routine in the style of their class and perform at a local theater (Dress Rehearsal Dec. 12/Performance Dec. 13)



HOLIDAY

Extravaganza!



'Tis the season



Conservatory Classes marked with a reindeer participate in our Holiday Extravaganza! Each included class will learn one routine in the style of their class!

Mandatory Dress Rehearsal:

Friday, December 12 (afternoon and evening) at a local theater.

Performance:

Saturday, December 13 at 4:00pm (dancers arrive at 3:00pm) at a local theater.

Additional Investment:

Costume rental (\$50; applied at registration) and performance tickets.



ECLIPSE DANCE TEAM

TPAC's audition-based Eclipse Dance Team has inspired confidence, life skills, and artistry in young dancers for over a decade. With a focus on technique, personal growth, community, and unmatched on-stage experiences, your dedicated dancer will find their second home on EDT!

INTRO

Our Introductory Teams give dancers the opportunity to make new friends, learn new skills, and experience dance in a whole new way!

TEAM	TRAINING	PERKS + PERFORMANCES
Stars Jazz, gr. 2-5	2.25 hours per week minimum (Stars Team class, Ballet, Jazz/Hip-Hop)	Fall <ul style="list-style-type: none"> TPAC's Cocoa House Holiday Extravaganza Winter/Spring <ul style="list-style-type: none"> Community Benefit 1 routine at 1 competition (2 competitions for Altitude and Comets) Spring Recital Perks <ul style="list-style-type: none"> Complimentary upgrade to TPAC VIP membership Mentorship from TPAC staff and EDT Company dancers On-site coaching Dedicated EDT Admin Team Exclusive EDT parties and events
Calypso Jazz, gr. 2-6	2.75 hours per week minimum (Calypso Team class, Ballet, Jazz/Hip-Hop)	
Altitude Jazz, gr. 3-6	4 hours per week minimum (Altitude Team class, Ballet, Jazz, Elective)	
NEW Comets Acro Pop, gr. 4-6	1.5 hours per week minimum (Comets Team/Technique class)	

COMPANY

Company dancers are dedicated to their craft and passionate about dance! Through a rigorous training program, a wide variety of on-stage opportunities, and by giving back to the community, Company dancers excel on stage and in life.

NEW Ensemble gr. 4-12	5 classes per week minimum (Ballet, Jazz, Lyrical, Production, and 1 competition group class)	Intro Teams offerings plus: <ul style="list-style-type: none"> 3 competitions/2 routines total September Choreography Week February Boot Camp 2 additional community shows
Intensive gr. 4-12	6 classes per week minimum (Ballet, Jazz, Lyrical, Production, and 2 competition group classes)	Ensemble offerings plus: <ul style="list-style-type: none"> 3 competitions/3 routines total Dancer Pathways Meeting
Pre-Pro gr. 6-12	9 classes per week minimum (2 Ballet classes, Jazz, Lyrical, Production, 3 competition group classes and 1 elective)	Intensive offerings plus: <ul style="list-style-type: none"> 3 competitions/4 routines total Mid-Year Progress Report Frosted Flex Workshop

AUDITIONS IN MAY AND AUGUST!

LEARN MORE



YOUTH MUSICALS

What's
included?

- ★ Souvenir T-Shirt!
- ★ Over 20 workshop hours with professional coaching!
- ★ Rental costume + microphone!
- ★ Performance at a local theater!
- ★ Cast Party and more!

IMPORTANT DETAILS

ATTENDANCE POLICY: We allow two rehearsal absences total. We do not permit any absences, early departures, or late arrivals to the final two rehearsals and performance.

REFUNDS/MANDATORY DATES: There are no refunds or credits for any reason within 1 month from the program start date, regardless of if you uncover conflicts with mandatory dates at any point in the production process or if you are unable to comply with TPAC's Attendance Policy. Please read all dates and policies carefully.

REGISTRATION: Certain casts will fill up within minutes. If you know your child wants to participate, please try to sign up right at 7pm on Sunday.

FALL YOUTH MUSICAL

Disney

FROZEN JR.

Register
Online

Sun, June 8
@ 7pm

SEPTEMBER 18–NOVEMBER 23

Cast A: Grades 2–4 (starts Thurs, 9/18)

- Role Placement/Rehearsals Thursdays 4:00–6:00pm
- Tech rehearsal Thursday, November 20 from 3:45–6:00pm*
- Dress rehearsal Saturday, November 22 at 4:00–6:15pm*
- Performance Sunday, November 23 at 9:00am* (8am arrival)

Cast B: Grades 2–4 (starts Sat, 9/20)

- Role Placement/Rehearsals Saturdays 2:00–4:00pm
- Tech rehearsal Friday, November 21 from 4:00–6:15pm*
- Dress rehearsal Saturday, November 22 at 11:00–1:15pm*
- Performance Sunday, November 23 at 12:00pm* (11am arrival)

Cast C: Grades 3–5 (starts Sat, 9/20)

- Role Placement/Rehearsals Saturdays 9:30–11:45am
- Tech rehearsal Wednesday, November 19 from 3:45–6:15pm*
- Dress rehearsal Saturday, November 22 at 1:45–4:00pm*
- Performance Sunday, November 23 at 3:00pm* (2pm arrival)

Cast D: Grades 5–9 (starts Sat, 9/20)

- Role Placement/Rehearsals Saturdays 11:45am–2:00pm
- Tech rehearsal Wednesday, November 19 from 6:30–9:00pm*
- Dress rehearsal Saturday, November 22 at 8:45–11:00am*
- Performance Sunday, November 23 at 6:00pm* (5pm arrival)

Cast E: Grades 5–9 (starts Thurs, 9/18)

- Role Placement/Rehearsals Thursdays 6:00–8:15pm
- Tech rehearsal Thursday, November 20 from 6:30–9:00pm*
- Dress rehearsal Friday, November 21 at 6:45–9:00pm*
- Performance Saturday, November 22 at 8:00pm* (7pm arrival)

*Mandatory dates (no exceptions).

No rehearsals Thursday, October 2 or Saturday, October 11.



WINTER/SPRING YOUTH MUSICAL



**Register
Online**
Sun, Oct. 19
@ 7pm

JANUARY 22–APRIL 12

Cast A: Grades 2–4 (starts Thurs, 1/22)

- Role Placement/Rehearsals Thursdays 4:00–6:00pm
- Tech rehearsal Thursday, April 9 from 3:45–6:00pm*
- Dress rehearsal Saturday, April 11 at 4:00–6:15pm*
- Performance Sunday, April 12 at 9:00am* (8am arrival)

Cast B: Grades 2–4 (starts Sat, 1/24)

- Role Placement/Rehearsals Saturdays 2:00–4:00pm
- Tech rehearsal Friday, April 10 from 4:00–6:15pm*
- Dress rehearsal Saturday, April 11 at 11:00–1:15pm*
- Performance Sunday, April 12 at 12:00pm* (11am arrival)

Cast C: Grades 3–5 (starts Sat, 1/24)

- Role Placement/Rehearsals Saturdays 9:30–11:45am
- Tech rehearsal Wednesday, April 8 from 3:45–6:15pm*
- Dress rehearsal Saturday, April 11 at 1:45–4:00pm*
- Performance Sunday, April 12 at 3:00pm* (2pm arrival)

Cast D: Grades 5–9 (starts Sat, 1/24)

- Role Placement/Rehearsals Saturdays 11:45am–2:00pm
- Tech rehearsal Wednesday, April 8 from 6:30–9:00pm*
- Dress rehearsal Saturday, April 11 at 8:45–11:00am*
- Performance Sunday, April 12 at 6:00pm* (5pm arrival)

Cast E: Grades 5–9 (starts Thurs, 1/22)

- Role Placement/Rehearsals Thursdays 6:00–8:15pm
- Tech rehearsal Thursday, April 9 from 6:30–9:00pm*
- Dress rehearsal Friday, April 10 at 6:45–9:00pm*
- Performance Saturday, April 11 at 8:00pm* (7pm arrival)

*Mandatory dates (no exceptions).

No rehearsals February 12, 14, 19, 21 and March 12 and April 4.



APPRENTICE PROGRAM

About

Our Apprentice Program (Assistants, ages 14-18 and Jr. Helpers, ages 13 and under) provides experienced TPAC students with the opportunity to help inspire and motivate the next generation while learning valuable leadership, teaching, and communication skills.

Requirements

- Open to students in grades 4-12 with acceptance into the program
- 2+ years of experience in your assigned program
- Attend 2 training meetings (September and January) and participate in 1-2 hours of peer-to-peer observations
- Purchase Apprentice t-shirt (\$30) and two 1-hour STAR Leadership workshops
- Attend all assignments with minimal conflicts.
- Attend all associated performances for your assigned class/workshop
- Enroll in and consistently attend at least one 2025-2026 Conservatory class

Sample Responsibilities

- Assist with attendance
- Demonstrate and participate in all class activities
- Assist with classroom management
- Opportunity to teach a sample lesson
- Work with your cooperating teacher(s) to bring a positive experience to every class.

How to Apply

- Fill out our online application (link to be emailed in July).
- Applications are due August 20 and decisions will be emailed by August 31.



STAR LEADERSHIP

A series of 8 one-hour leadership workshops designed for students ages 9-18 led by members of TPAC's teaching team.

Register in August!

The Performing Arts Connection

Grades K-5

NEW

★ TPAC ★ KIDS CLUB

Introducing TPAC Kids Club, the perfect midweek adventure for kids who love to play, create, and connect. Kids love it because **EVERY** day feels like a new party! Choose a 2-pack, 4-pack, or the ultimate 8-pack (the more you play, the more you save!).



Schedule
**HALF-DAY
WEDNESDAYS**

Times
12:00-5:15PM

Tuition Starting at
\$165

Theme Schedule

- ✓ Kick-Off Carnival (9/10)
- ✓ Cupcake Creations (9/24)
- ✓ Bluey Bash (10/8)
- ✓ Spooktacular! (10/22)
- ✓ Artspllosion! (11/5)
- ✓ Relay Mania! (11/12)
- ✓ Friendsgiving Fest (11/19)
- ✓ Winter Wonderland (12/10)

Each Kids Club member gets their exclusive Kids Club pin plus a fun collectible each week! Enrollment is limited for each day - act fast!

REGISTER NOW! www.performingartsconnection.com



The Performing Arts Connection

Register May 4 @ 7pm!



WEDNESDAYS = FUN

Our Wednesday Fun Days are our answer to your after-school childcare needs. Every day is filled with fun, friends, games, crafts, movement and even specials like martial arts or dance on half-days! TPAC helps connect families for carpooling in advance of the first day.

FALL TERM SCHEDULE

September 10–December 10

2:45–5:15pm (Sudbury half-day Wednesdays included 12pm–5:15pm). Sept. 10, 17, 24; Oct. 1, 8, 15, 22, 29; Nov. 5, 12, 19; Dec 3, 10. No Fun Days 11/26.

AND BEYOND . . .

Stay tuned for more information
coming in August!

**"PROVE IT" is TPAC's award-winning, audition-based theater group open to high school performers.
Spring 2026**



"PROVE IT"

**Encore is TPAC's Adult Glee Club, offering a performance experience that is always
"better than expected"!**



ENCORE

**TPAC's Holiday Troupe is designed for serious musical theater performers seeking uniquely elevated performance opportunities!
Late Fall 2025**



HOLIDAY TROUPE



★ TUITION SCHEDULE ★

Program	Term 1 Investment	Term 2 Investment
The Conservatory Program <i>6.75 hours or less per week</i>	\$485 per hour	\$485 per hour (auto-charged Nov. 1)
The Conservatory Program <i>7 hours or more per week</i>	\$399 per hour	\$399 per hour (auto-charged Nov. 1)
Youth Musicals	\$529	\$529
Little Limelight	\$399 per 45-minute class	\$460 per 45-minute class
After-School Fun Days	\$710	TBD
Private Lessons	<u>Packages starting at \$45 per 30-minute lesson</u>	
April Vacation	\$475	
Additional Fees	Investment	
Membership Fee	\$39 per student (upgrade to VIP for \$40) <i>Each student's membership fee covers registration and printed materials for all applicable programs through 4/25/26.</i> <i>VIP Membership includes Priority Ticket Sales for May Recitals, Season 19 T-Shirt (when purchased by 9/8), and a 15-minute Student Pathways Meeting.</i>	
Conservatory Dance Spring Recital Costumes	\$99-\$110 per dance class (n/a for Acting/Musical Theater)	
Recital/Performance Tickets	\$16.50-\$30 per ticket	
Class Attire/Shoes	Most programs have a required dress code - you are welcome to purchase items through TPAC's online shop or on your own.	

All tuition includes 2 snow days per class. Payment plans may be available for a \$50 fee per student (requests for alternative payment plans should be submitted via email to the office at least one week prior to registration). Limited need-based financial aid is available for most programs. Schedule adjustments for Conservatory Term 2 must be communicated to the office by October 20.

A Pathway for Every Performer

"This is where you start, this is where you grow."

AGES 7 AND UNDER

Little Limelight™

Dance and Musical Theater Classes



GRADES 2-12

THE CONSERVATORY PROGRAM

Leveled training program in theater and dance.



GRADES 2-12

YOUTH MUSICALS / PROVE IT

Fully-staged musical productions.



GRADES 2-12

ECLIPSE DANCE TEAM

Competitive dance team.

AGES 7-ADULT

PRIVATE VOICE LESSONS

1:1 guidance to focus on your personal goals.

And Beyond . . .

